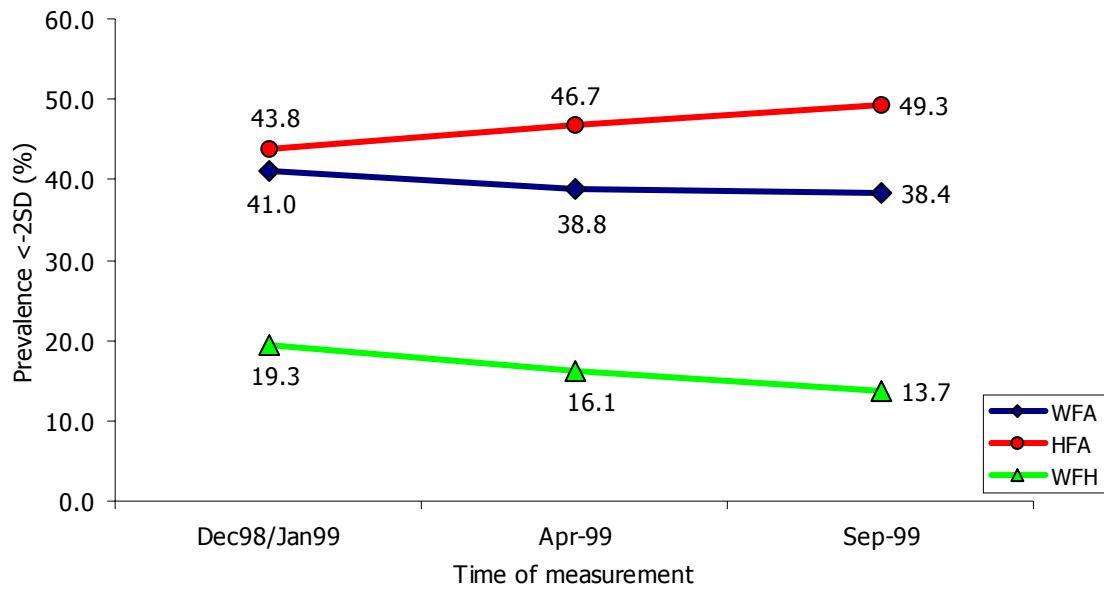


Figure 4
Comparing the prevalence of wasting, stunting and underweight among preschool children (N=4500) who received supplemental feeding from Social Safety Net Project³



³ The raw data for reassessment received from Dr. Razak Thaha (School of public health, the University of Hasanudin), principal investigator of longitudinal study for the evaluation of Social Safety Net project on food supplementation for preschool children.