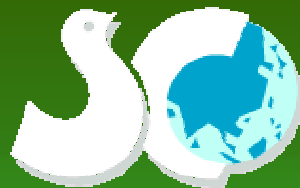


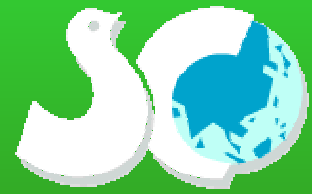
The views expressed in this paper are the views of the author and do not necessarily reflect the views or policies of the Asian Development Bank Institute (ADBI), the Asian Development Bank (ADB), or its Board of Directors, or the governments they represent. ADBI does not guarantee the accuracy of the data included in this paper and **accepts no responsibility for any consequences of their use**. Terminology used may not necessarily be consistent with ADB official terms.

# **An Internet-based E-Learning System, SUPERCOURSE and a Proposal of SUPERCOURSE.ASIA NETWORK (SCAN)**



**Hiko TAMASHIRO, Professor and Chair  
Hokkaido University Graduate School of Medicine  
Sapporo, Japan**

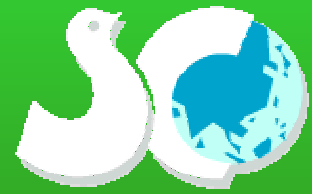
**18 May 2005  
ADB Institute, Tokyo, Japan**



# Outline of Presentation

- Introduction
- Supercourse
- Supercourse.Asia
- Supercourse.Japan
- Supercourse.Asia Network (SCAN)
- Anticipated Benefits
- Conclusions





# Introduction

- **Education** is the key to success.
- **Health** is fundamental for people to attain sustainable development for the future.
- The **Internet** is rapidly becoming available by all people in the world.
- Its **cost-effective** use can provide an opportunity for fostering both education and health of people even in remote areas and islands.



# Health as an Input into Economic Development

**H  
E  
A  
L  
T  
H**

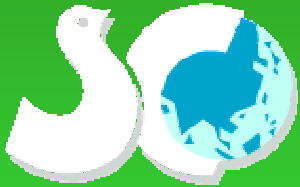
**Economic Policies & Institutions**  
**Governance**  
**Provision of Public Goods**

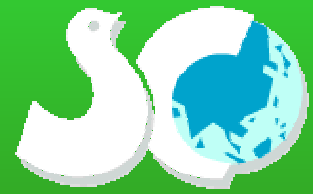
**Human Capitals:**  
**Education, On-the-job training**  
**Physical & cognitive development**

**Science & Technology**

**Enterprise Capital:**  
**Investments**  
**Teamwork & organization of workforce**  
**Investment opportunities**  
**Ability to attract labor & capital**

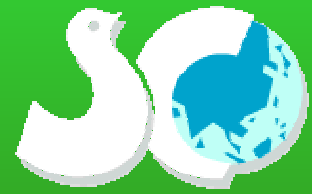
**E  
C  
O  
N  
O  
M  
I  
C  
  
D  
E  
V  
E  
L  
O  
P  
M  
E  
N  
T**





# **Wireless Communication in India at B.C. 3000!**





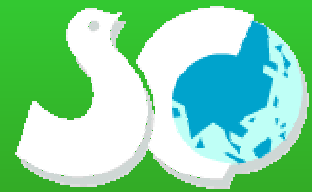
# **Supercourse**

**-Epidemiology, the Internet  
and Global Health-**

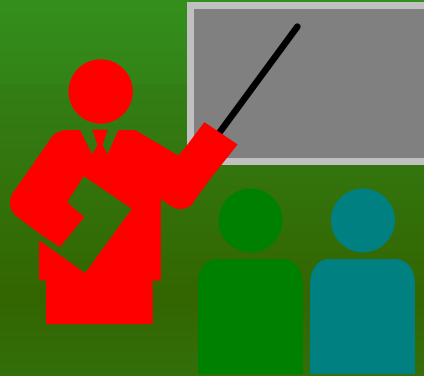
**Global Health Network (GHNet)**

**Dr Ron LaPorte, University of Pittsburgh**



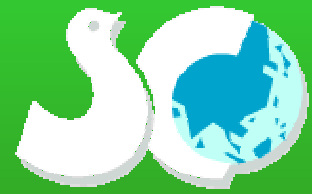


# What is the Supercourse?



- A global library of lectures
- Sharing our most exciting PowerPoint lectures and other e-materials on the Internet
- A means of a continuing education
- Global and open source (free)
- Multiple **languages** and disciplines in medicine

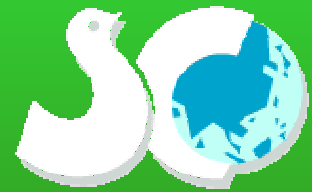




# The Most Widely Spoken Language?

***BROKEN  
ENGLISH!***





# What is the Supercourse?


- Teacher helping and teaching the teacher
- 1,500 lectures registered
- > 1,000 authors (lectures)
- Quality control of the lectures
- Global participation  
(>10,000 faculty; 134 countries)
- Global mirror sites

Supercourse - Epidemiology, the Internet and Global Health - Microsoft Internet Explorer

File Edit View Favorites Tools Help

Address <http://www.pitt.edu/~super1/>

Y! Search Web NEW Toolbar Update Mail My Yahoo! Games Basketball Personals Music



### Recent Just In Time (JIT) lectures: [TSUNAMI Earthquake & Tsunami South Asia, 26 Dec 2004](#)

This course ([Executive Summary](#)) is designed to provide an overview on epidemiology and the Internet for medical and health related students around the world. The concept of the course is described in the [British Medical Journal](#) as the [Global Health Network University](#). Lecture style is described in the [Nature Medicine](#) as [Hypertext Comic Books](#). "Supercourse" has 2200 lectures already.

#### Epidemiology - Internet - Global Health

#### What is the Supercourse?

- [Overview](#)
- [Developers](#)
- [Internet Resources](#)
- [Publications \(108\)](#)
- [Supercourse Mirror Sites \(44\)](#)

#### Other Supercourse Lectures

and

#### [Supercourse Courses](#)

#### Supercourse Lectures

- [Lecture by Topic](#)
- [Lecture by Author \(1001 authors\)](#)
- [Lecture by Alphabetic Order](#)
- [New Lectures](#)
- [All Lectures](#)

#### Want to join us?

- [How to join the faculty member?](#)
- [Instructions for authors](#)
- [Supercourse Mirroring Download](#) - Updated: March/01/05
- [Public Health Training in Pittsburgh?](#)

Google  Search

Start Win... T... I... Y... S... S... S... m... C... C... P... S... Internet 4:55 PM

<http://www.pitt.edu/~super1/>

Just In Time Supercourse - Microsoft Internet Explorer

File Edit View Favorites Tools Help

Address <http://www.pitt.edu/~super1/JIT/jit.htm>

**Just In Time Supercourse**

[more lectures at Disasters Supercourse](#) updated April 1, 2005

Tsunamis are primarily associated with earthquakes in oceanic and coastal regions

**Just-in-Time Lecture**  
**Earthquake & Tsunami**  
**South Asia, 26 Dec 2004**

By: Ali Ardalan, Ronald E. LaPorte, Eugene Shubnikov, Fatna Linkov & Eric K. Neftci

A tsunami can compete with a jet airplane, traveling across the ocean in less than a day.

**JIT (Just-in-Time) Lecture**  
**TSUNAMI**

By: Ali Ardalan, Ronald E. LaPorte, Eugene Shubnikov, Fatna Linkov & Eric K. Neftci

A violently rotating column of air (vortex), hanging from a cumulonimbus cloud, with circulation that touches the surface of the earth

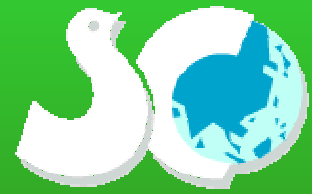
**Tornados**

**JIT lectures:**

- **Tsunami**
- **SARS**
- **Avian Flu**
- **BSE, etc.**

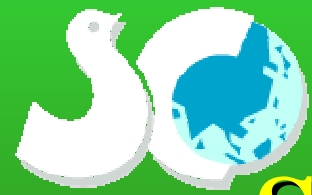
Start Windows ... Super... Inbox... Chikka Chikk... Yaho... Micro... Yaho... Just ... Internet 9:52 AM

<http://www.pitt.edu/~super1/JIT/jit.htm>

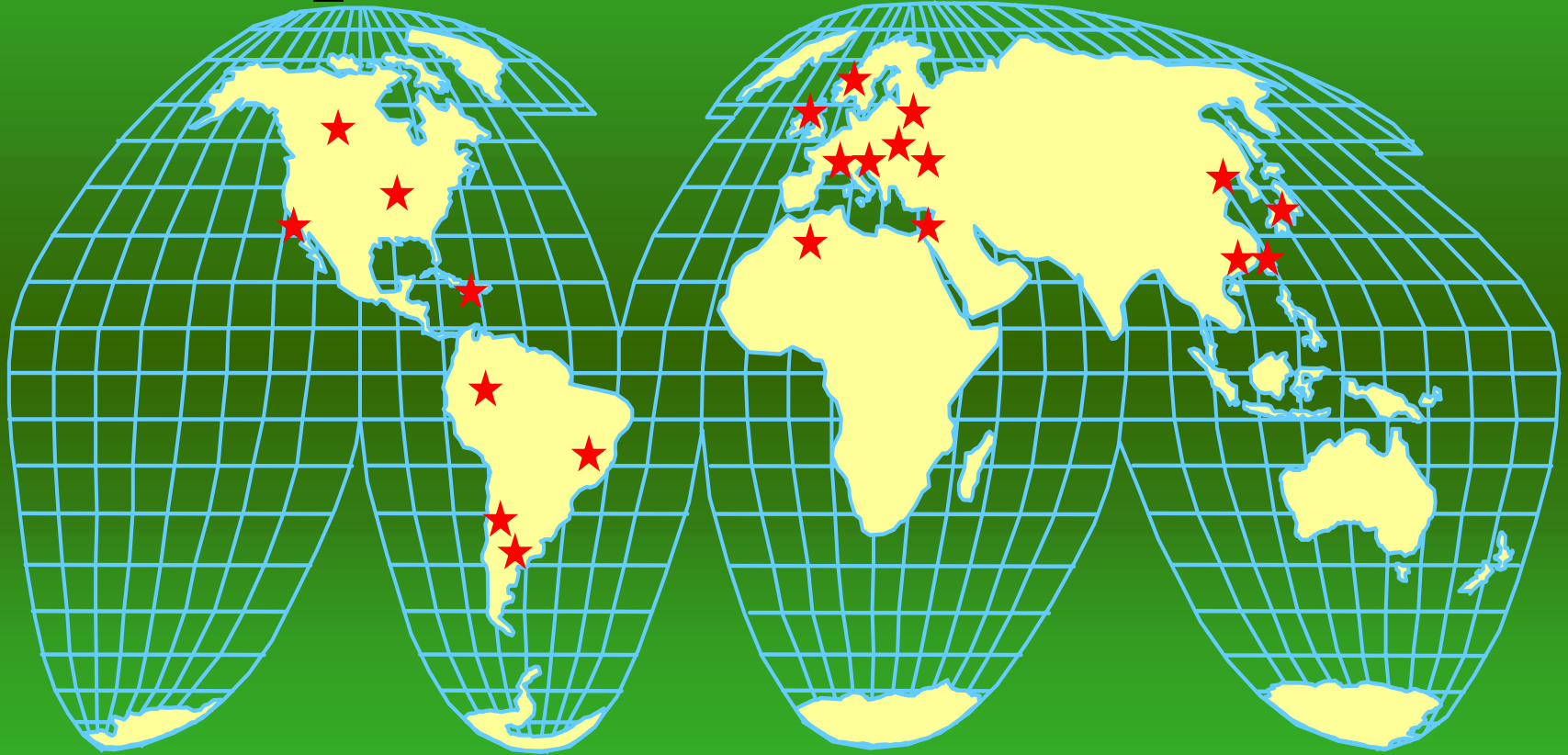


# Supercourse Courses

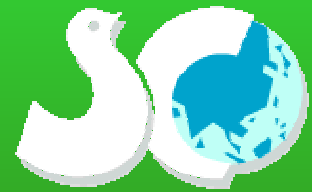
- Health, Environment, Sustainable Development
- Epidemiology
- Pathology
- Rehabilitation
- Veterinary Preventive Medicine
- Behavioral Science, etc.



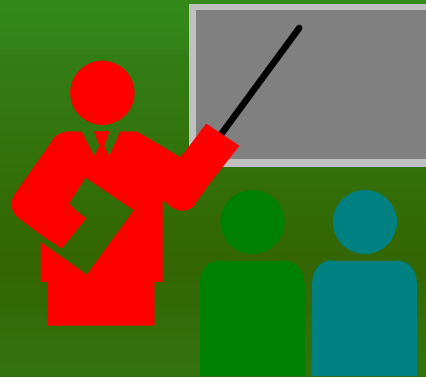
# Supercourse Mirror Sites



44 mirrored sites in 28 countries



# What is the Supercourse.Asia?



- A regional library of lectures, most relevant to the region in terms of languages, contents, etc.
- Children and students = active partners
- To be managed by SCAN?



ヘルスサイエンスの学習機会向上をめざして



スーパーコース・ジャパン

サイトの作成・管理はスーパーコースジャパン研究会が行っています。  
サイトに関するご意見・ご連絡がありましたら、下記までお願いします。  
連絡先:  
北海道大学大学院医学研究科社会医学専攻予防医学講座老年保健医学分野  
〒060-0638 北海道札幌市北区北15条西7丁目  
TEL 011-706-5061 FAX 011-706-7374  
tamashiro@med.hokudai.ac.jp

2003 © Supercourse Japan Laboratory, All rights reserved.  
Dezine by Basis Inc.

### NEWS

● 今回は、わが国の疫学の第一人者である重松逸造先生の「疫学入門」を4シリーズでお届けします。このシリーズは最初、「くらしと放射線」(編集世話人: 青山喬滋 賀医科大学名誉教授; 提供: 関西電力株式会社 原子力事業本部)に掲載されたものを、著者と関西電力の担当者の許可を得て、我々のスーパーコース用に編成し直したものです。この疫学入門は、放射線の健康影響調査・評価における疫学の役割をわかり易く説明したものです。

(スーパーコース研究会代表 玉城英彦)

▶ [過去のニュース](#)

### 新着講義

- [疫学入門\(I\)](#)
- [疫学入門\(II\)](#)
- [疫学入門\(III\)](#)
- [疫学入門\(IV\)](#)

▲ [PAGE TOP](#)



## Globalization and Emerging Governance Modalities

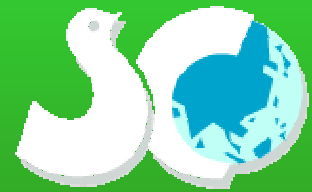
**Deane Neubauer**



About Author : I received a Ph.D. from Yale in 1965 and have taught at the University of California (Berkeley and Irvine), held a postdoctoral fellowship in Anthropology at the University College, London, and currently hold adjunct professorships in Public Health at the University of Hawaii and at the Faculty of Health Sciences of the University of Sydney. In recent years, I have been active in health policy reform activity in Hawaii, the United States, New Zealand, and Australia. This lecture is based on the Symposium on Risk Management and Global Governance of Zoonoses held on 5-6 October, 2004, Sapporo, Japan.



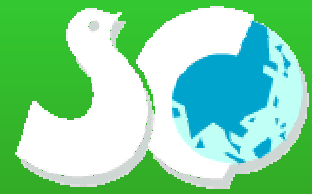
Treatment strategies for SARS were first developed on theoretical bases and from clinical observations and inferences. Prospective randomized controlled treatment trials were understandably lacking during the first epidemic of this novel disease. The mainstream therapeutic interventions for SARS involve broad-spectrum antibiotics and supportive care, as well as antiviral agents and immunomodulatory therapy. Assisted ventilation in a non-invasive or invasive form would be instituted in SARS patients complicated by respiratory failure.



# Objectives of the Project

- To establish the **Supercourse.Asia Network (SCAN)**
- To develop the Supercourse.Asia (a model of e-learning for the Pacific Islands)
- To provide the Pacific Islands an equitable opportunity of education and of attaining better health

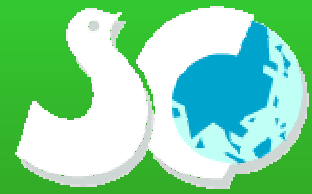




# What is the SCAN?

- A regional network of voluntary people including children in academia, government, int'l/regional offices
- A regional body of coordinating the Supercourse. Asia and disseminating information

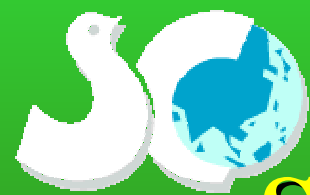




# Who are the Potential Members?

- **Pacific Islands Forum** members  
(academic staff, children etc.)
- **Regional Agencies** (**UNESCO**, **FAO**, **UNDP**, **UNU**, **WB**, **ADB**, **WHO**, **JICA**, etc.)
- **Regional universities** (Hawaii, **Hokkaido**, Ryukyus, South Pacific etc)
- **Regional NGO/NPO**, etc.



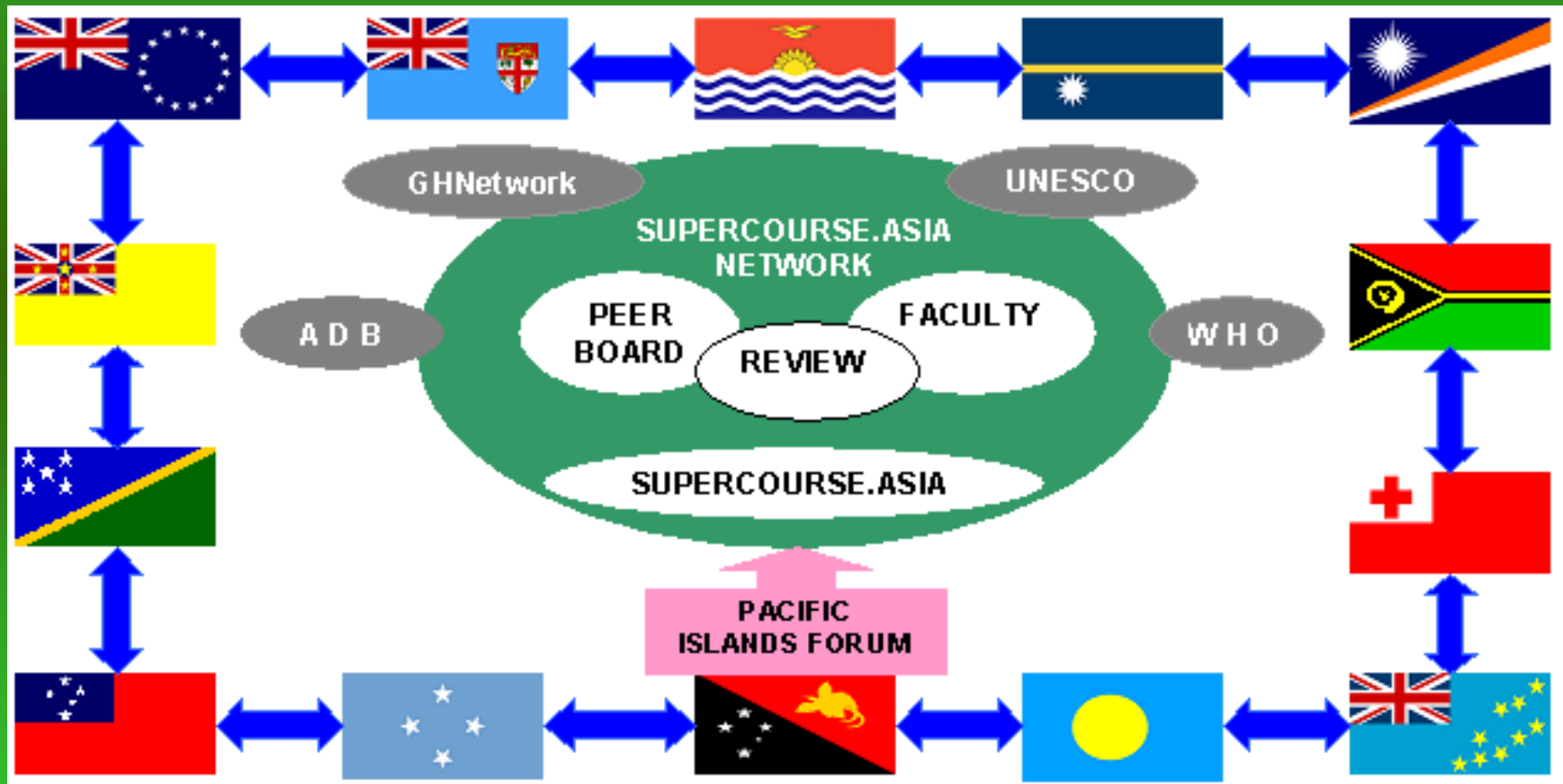


# SCAN's Potential Members (as of May 2005)

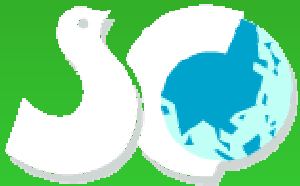
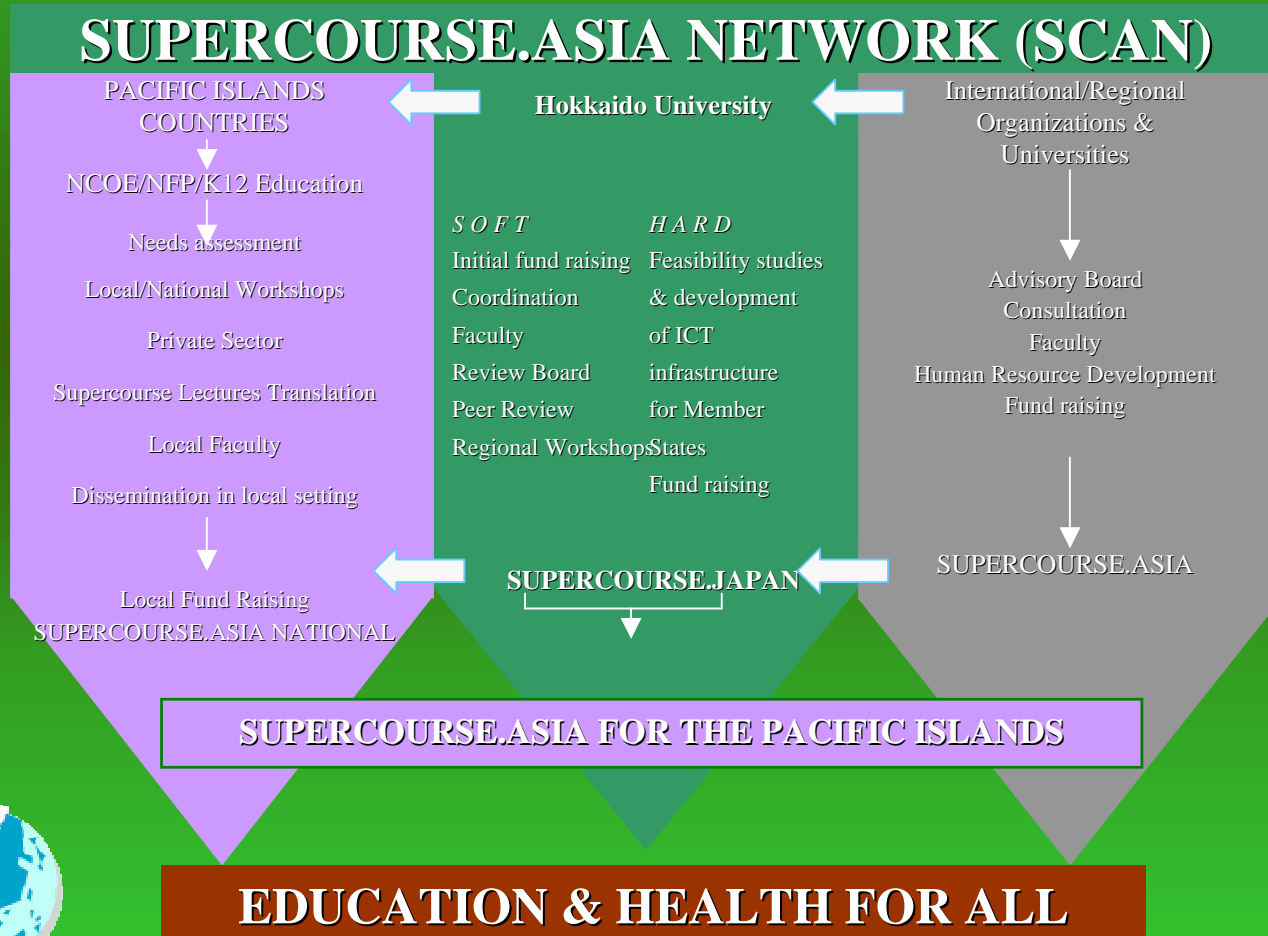
Country	Number of "Supercourse.Asia" Faculty Members
Bangladesh	2
China	10
Hong Kong	1
India	2
Indonesia	2
Korea	12
Malaysia	3
Mongolia	17
Pakistan	1
Philippines	2
Singapore	2
Taiwan	8
Thailand	25
Vietnam	1
<b>Total</b>	<b>90</b>

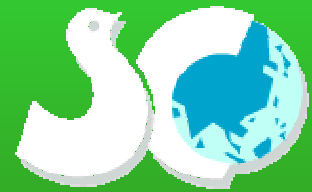


# Conceptual Framework of the SCAN



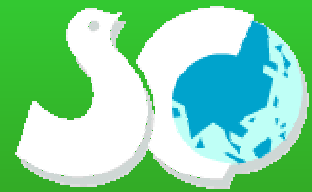
# Plan of Action of the Supercourse.Asia Network for the Pacific Islands





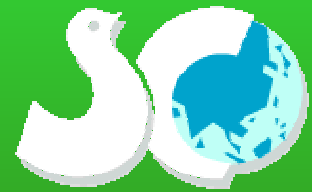
# Characteristics of Supercourse.Asia Network (1)

- It is based on the open source model, which allows free redistribution, shows the source code, and allows modifications and derived works.
- It provides for free the full content of the Supercourse lectures.
- This is especially useful for developing countries and minority populations with limited access to resources.
- It aims to overcome the digital divide by improving access in places with low band width Internet connection.
- It is a teaching support system – differing from a traditional distance education system, in that it aims to teach the teachers.



# Characteristics of Supercourse.Asia Network (2)

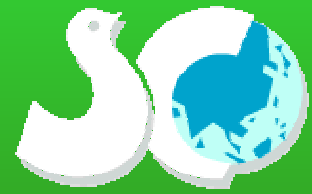
- It provides timely information for action – one of the greatest advantages of having a regional faculty base with varied areas of expertise.
- It can provide “**just in time lectures**” (JIT) which are very important in the field of public health (e.g., lectures on SARS from the members of China and Singapore, tsunami and earthquakes from Russian and Iranian members).
- It is a “hyper-text comic book format”.
- Hypertext links from text, images, tables, and pictures take the reader to other relevant Supercourse lectures, images, or other websites on the Internet.



## **Anticipated Benefits (1)**

- **It can provide JIT lectures.**
- **The most important is the exchange of information and the opportunity to work together.**
- **Mutual exchange of information among public health researchers, public health practitioners, physicians, teachers, and students.**

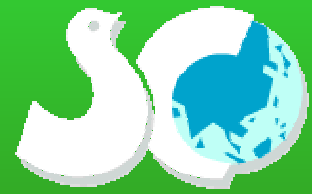




## Anticipated Benefits (2)

- More efficient, faster, and inexpensive channels of information exchange to more people.
- This will facilitate increased cooperation, and is necessary if we are to overcome the information divide, and allow the benefits of new public health discoveries to reach the last mile, to the most impoverished population.

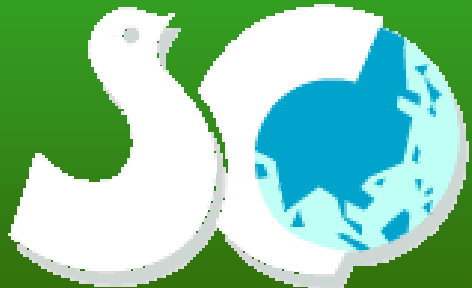




# Conclusions

- **The SCAN can help reach the unreachable by providing an excellent opportunity for learning for children, young and senior people.**
- **Collaboration among US will help in rapid, on-time, and efficient transmission and sharing of education and public health information.**
- **The proposed system will help attain better health and QOL of all in the Regions through a global village of universal learning and cost-effective use of the Internet.**





SUPERCOURSE  
ASIA



**Thank You**  
**“Arigatou”**

