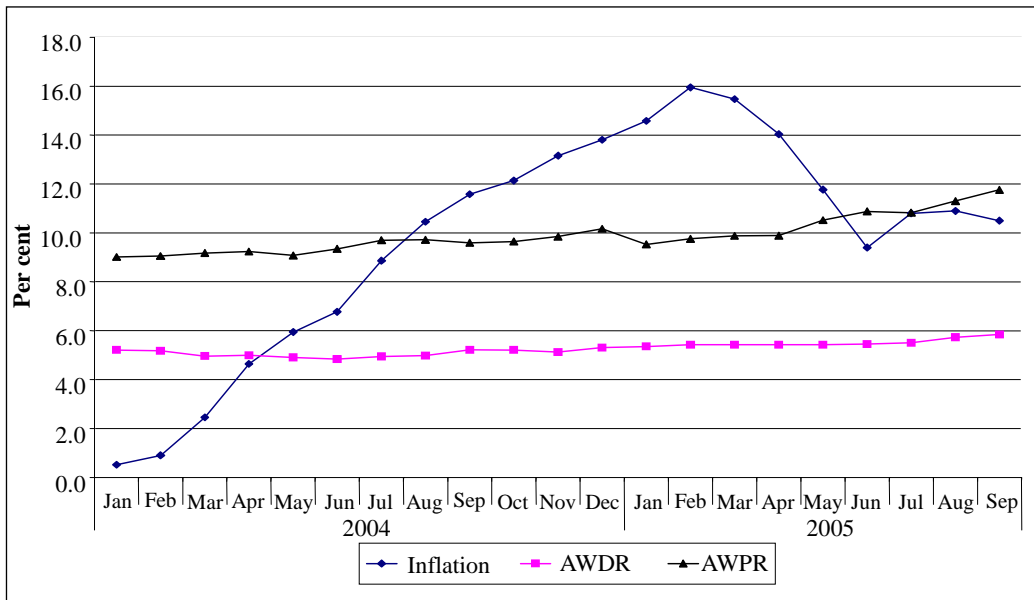


**Figure A-1. Inflation and Interest Rates**



*Notes:* Inflation = Point-to-point change in Colombo Consumer Price Index; AWDR= Average Weighted Deposit Rate; AWPR= Average Weighted Prime Lending Rate.

*Source:* Central Bank of Sri Lanka, Monthly Economic Indicators, various issues.