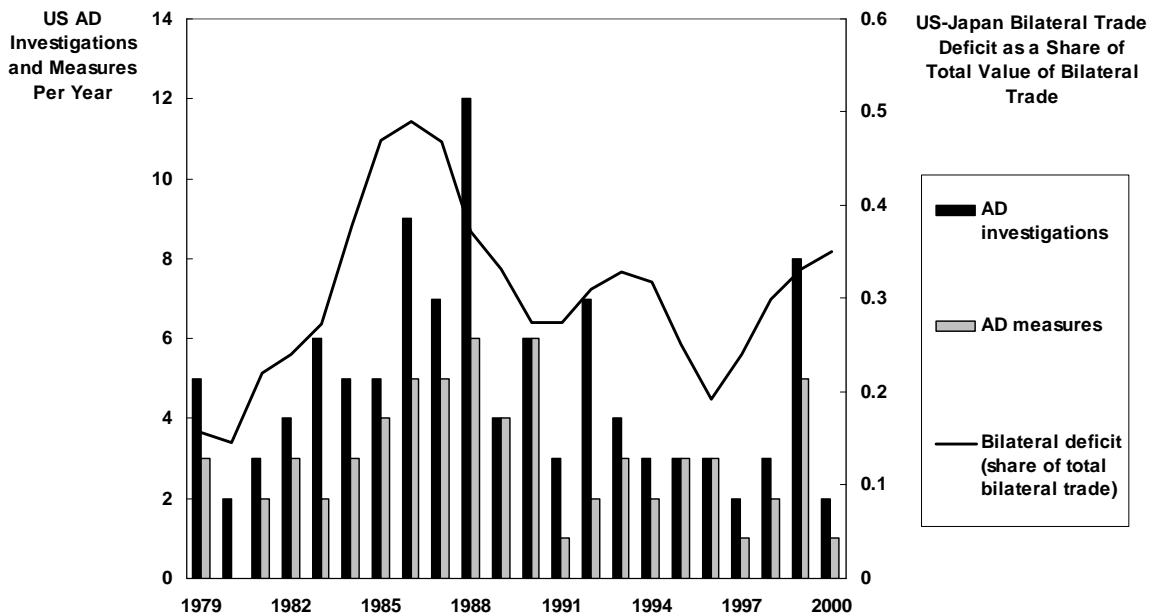
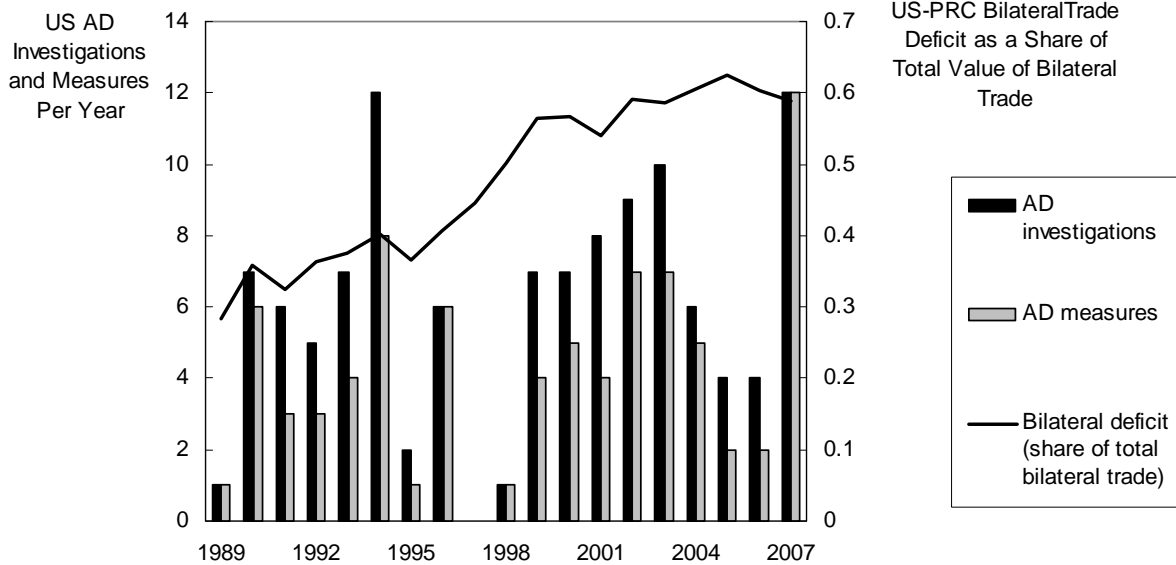


Figure 3: The US Bilateral Trade Deficits and Use of Antidumping

3a: US-Japan, 1979–2000



3b: US-PRC, 1989–2007



AD = antidumping, PRC = People's Republic of China, US = United States.

Notes: Light bars indicate the number of antidumping investigations initiated during those years that resulted in the imposition of final antidumping measures. The PRC is defined as the PRC plus Hong Kong, China.

Sources: Antidumping data compiled by the authors from Bown (2009a). US-Japan bilateral trade data are from Feenstra et al. (2005).