

International Migration and Development



Md. Shahidul Haque
IOM Regional Representative for South Asia
Bangkok, 31 October 2006

The views expressed in this paper are the views of the author and do not necessarily reflect the views or policies of the Asian Development Bank Institute (ADBI), the Asian Development Bank (ADB), or its Board of Directors, or the governments they represent. ADBI does not guarantee the accuracy of the data included in this paper and **accepts no responsibility for any consequences of their use.** Terminology used may not necessarily be consistent with ADB official terms.



“..... agreed that international migration could be a positive force for development both in countries of origin and countries of destination, provided that it was supported by the right set of policies”

- Summary of HLD on International Migration and Development (President of UNGA 2006)

Basic Propositions of the Presentation



- ***First***, migration is an essential, inevitable and a complex historical phenomenon (not event).
- ***Second***, orderly and humane migration can benefit all stakeholders, whereas irregular migration is a development retarding.
- ***Third***, government can and must manage migration through national policy and international co-operation.

Introduction

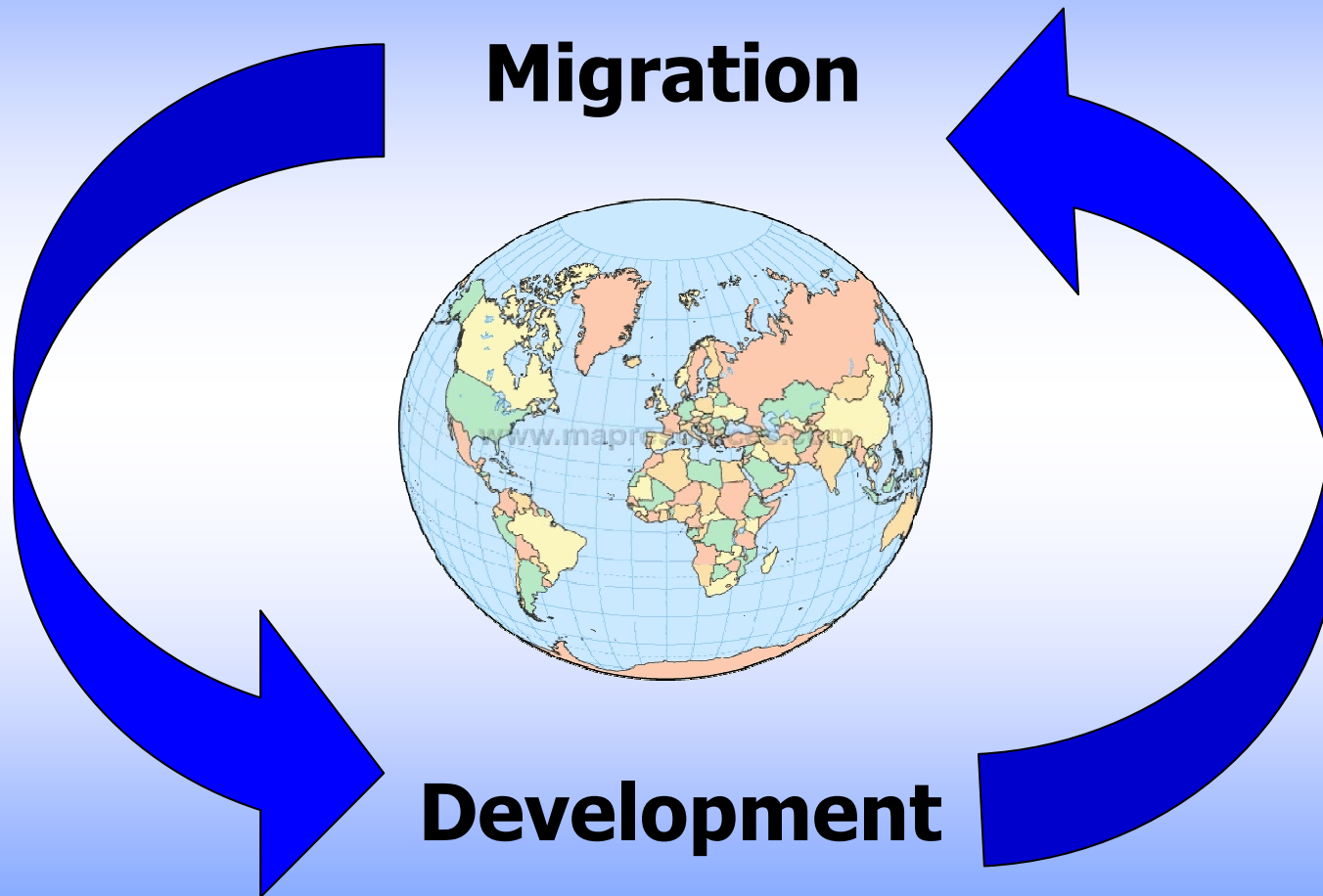


- ↪ In the globalized world, migration and development are multidimensional and fast evolving phenomena.
- ↪ 191 million people are living outside their place of birth (about 3.1% of world population).
- ↪ In Asia during 1995-99, 2.6 million migrant workers left their countries to work abroad. South Asia accounted for 46% of the outflow and South East Asia 50%.

Concept of Safe Migration

- ◆ Is a process as well as an outcome of an internal or international movement based on legal norms and rules. The decision to move is guided by informed choice and made without any compulsions, leading to non-exploitative situation. It provides an individual with the freedom to choose to be gainfully employed in a productive environment. It safeguards individuals' rights and respects gender equality. It also protects the right to return to one's own country.

Migration and Development Nexus



Nexus ...

↪ Consensus that migration is an integral part of the development process.

↪ The interfaces between international migration and development are exceedingly complex and contextual (origin, transit and destination).

↪ Migration and human security are multi-dimensional and organic in nature and integrally linked.

↪ There are two polarized views on impacts of migration on development:

- ◆ balanced growth approach
- ◆ systematic approach



Nexus ...

↪ Migration can not be a full substitute for development, but it can contribute to the development process.

↪ *The linkages could be better understood by:*

- ◆ Economic gain for countries - remittance, investment etc.
- ◆ Labor market and employment opportunities abroad



Nexus ...

↪ *The linkages:*

- ◆ Migration can empower women
- ◆ Impacts on social institutions - origin & destination countries
- ◆ Linkage with human security and national security



Remittance and Development

- ↪ Remittances and its multiplier effects is one of the most visible development impacts of migration
- ↪ Total value of remittances in 2005 was US\$ 232 billion of which a significant portion flowed to developing countries. (US\$ 142 billion in 2003 compared to US\$ 18.4 in 1980).
- ↪ Sound macro-economic policies and institutional framework for increased flow of remittance and productive utilization is a major challenge for countries.



Remittance ...

↪ Two views on impacts of remittance on development:

- **First**, “developmentalist” perspective
- **Second**, “migrant syndrome” perspective

↪ Remittance is a private fund and therefore has the potential to benefit migrants and their families more directly.



Non-Remittance Impacts on Development



- ↪ Migration can have both a positive and negative impacts on achievements of MDGs (Goals 1, 3, 6, 7 and 8)
- ↪ Migrants are development agents
 - Human capital
 - Social capital
- ↪ Diasporas are sources for economic and social development of origin and destination countries.

Non-Remittance ...



- ↪ Transnational space fosters innovation, progress and advancement.
- ↪ Return (brain circulation) can maximize developmental impacts of migration by transfer of skills.

Potentials of Migration to Address Inequalities



- ↳ Migration can be a useful tool to bring convergence in wealth generation and distribution.
- ↳ Migration can make greater contribution to addressing poverty in the origin country in terms of:
 - Reducing uncertainty of family income
 - Providing investment funds
 - Enhancing livelihood opportunities including for poor.

Potentials . . .



- ↪ Migration reduces income disparities across countries through “equalizing effects” on income of origin countries.
- ↪ Remittance helps upsetting negative balance of payments.
- ↪ Migration has long term positive impacts on destination countries as well.

Impact of Migration on Inter-State Relations



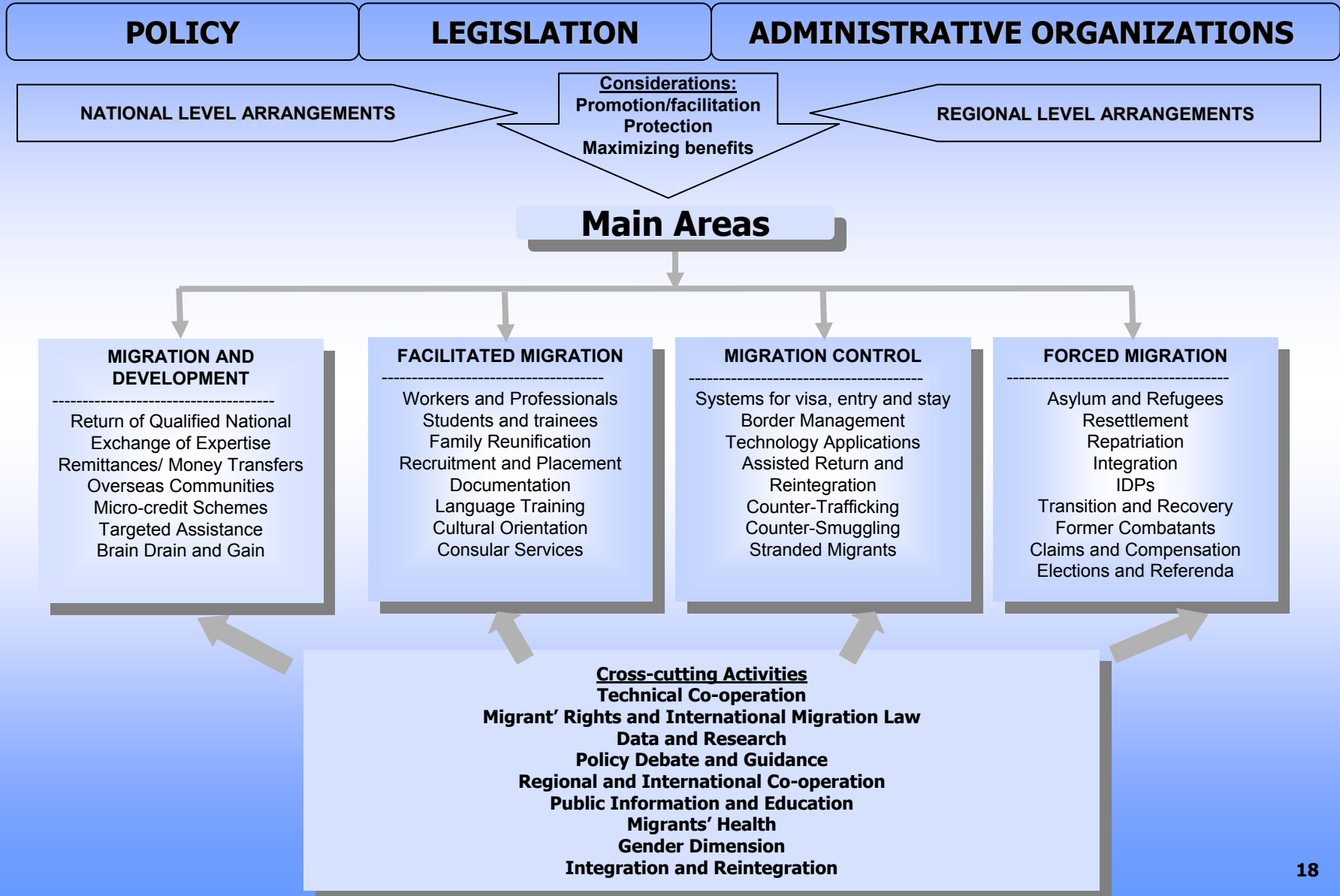
- ↪ Migration and development are inter-state phenomena with security implications either independently or combined.
- ↪ Managed migration helps forge economic, social and cultural bonds between peoples and countries. On the other hand, irregular migration harms inter-state relations.

New Policy to Manage Migration



- ↪ No global “regime/system” to manage migration
- ↪ A comprehensive migration policy at a national level, supported by appropriate legislations and implementing mechanisms
- ↪ Conducive regional and global environment to maximize development impact of migration and minimize its adverse consequences

Managing Migration



Conclusions



- ↪ Movement of people will assume greater significance in the development discourse.
- ↪ Globalization may face difficulties and development may suffer, if facilities for safe migration are not made available for origin and destination countries.
- ↪ A major shift in the development thinking is needed in line with migration realities.

Conclusions ...



- ↪ A new paradigm for migration has to be evolved taking into account the “equalizing” and “development” impacts of migration.
- ↪ The paradigm has to be consistent with global development, priorities as well as concerns of individual countries.



“What is crucial for poor nations is an equitable access to global market opportunities not charity... what we must insist today is comprehensive package from rich nations for immigration controls since the labor flows were suppose to be an essential component of a liberal economic system which would equalize global opportunities.”

- Late Mr. Mahbub Ul Haq



**HUMANE AND
ORDERLY MIGRATION
BENEFITS ALL**

Thank you indeed