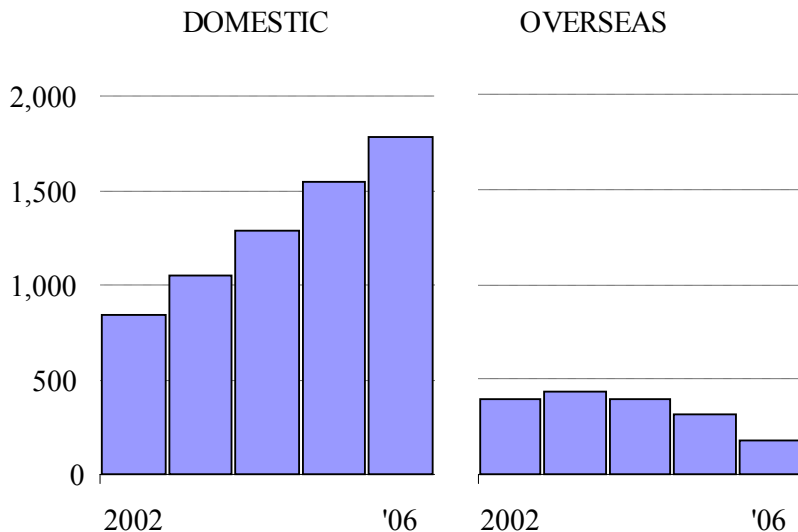


Chart 1: Domestic factory construction in Japan and new overseas operations started by Japanese companies



Notes: This Chart is reproduced from the Wall Street Journal article by Yuka Hayashi on June 12, 2007. According to the original notes, the year in overseas operations data covers from April of the previous calendar year to March of the year indicated.

Source: Japanese Ministry of Economy, Trade and Industry